



ExpressCard34 PC

I F- ECBR0001

Speed Advance Just in time

.....	2
.....	3
.....	3
.....	4
.....	4
.....	4
Windows 7	5
Windows Vista	5
Windows XP	6
Windows 2000	6
Windows 7	6
Windows 7	7
Windows Vista XP 2000	8
.....	9

PC
ExpressCard34

SSD

SAJ SAJ
Microsoft Windows Microsoft Corporation

Apple Macintosh MAC MAC OS Apple Computer Inc.

OS
Windows 7 Vista XP 2000 SP4
MAC OS X

PC Type II CardBus

ExpressCard34 PC
ExpressCard34

SSD PC

PC

ExpressCard34 CardBus

ON

1

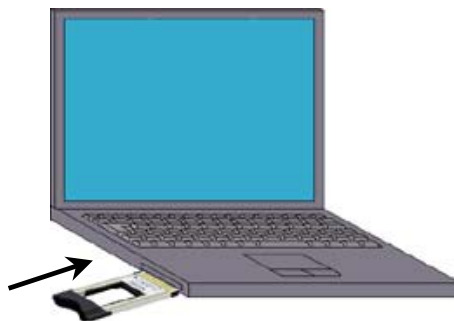
ON

Windows

2

PC

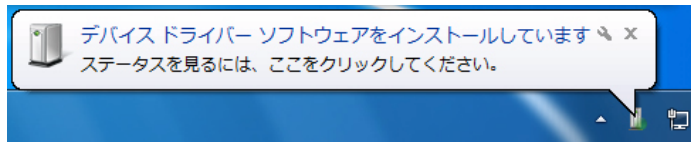
Type II CardBus



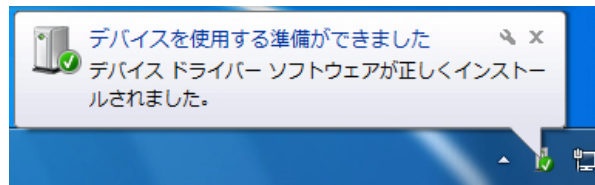
PC

Windows 7

1



2

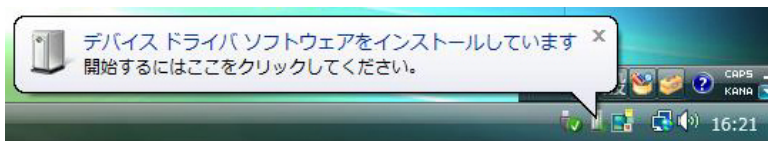


3

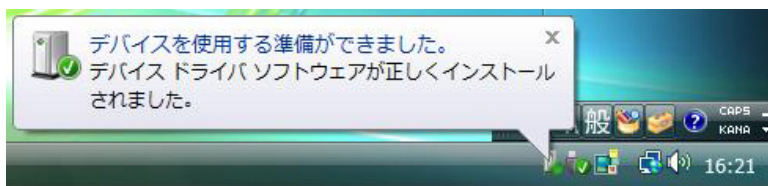
4

Windows Vista

1



2

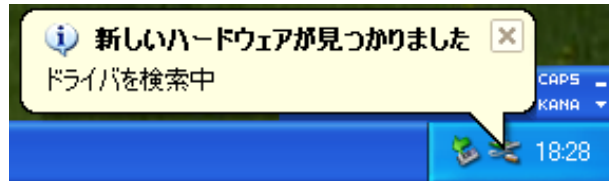


3

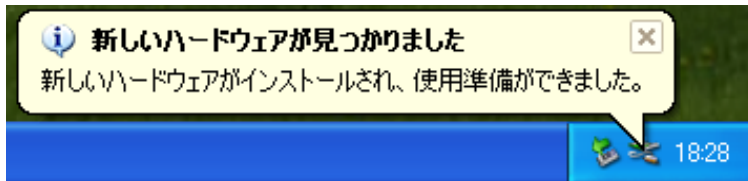
4

Windows XP

1



2

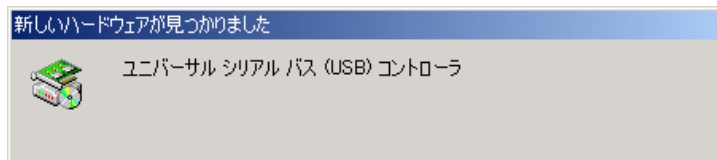


3

4

Windows 2000

1



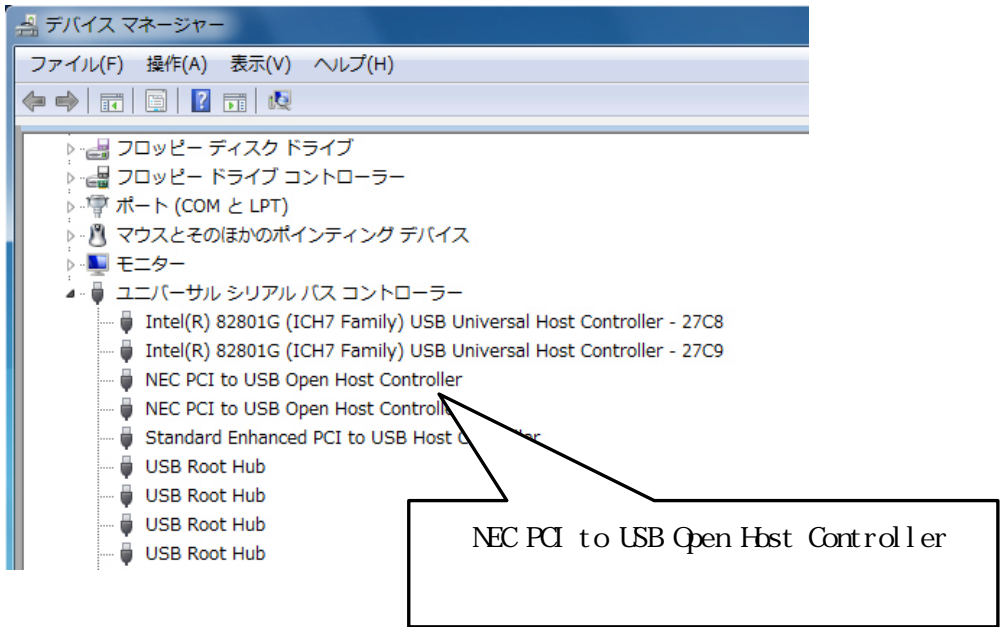
2

3

Windows 7 Vista XP 2000

Windows 7

Windows 7



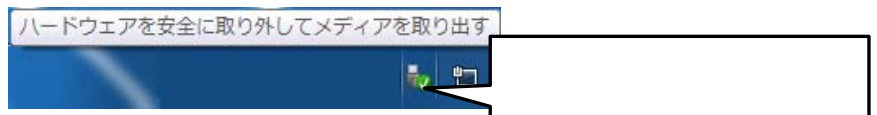
NEC PCI to USB Open Hbst Controller
NEC PCI to USB Open Hbst Controller

Vista XP 2000

Windows
Windows Vista

- Windows 7
PC

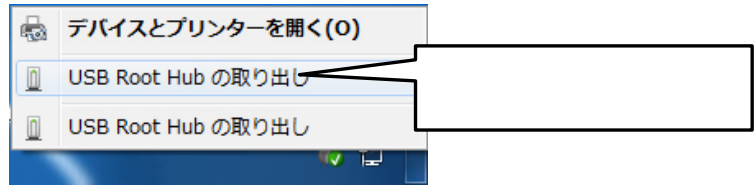
1



2

USB Root Hub

USB Root Hub



3



- Windows Vista XP 2000

1

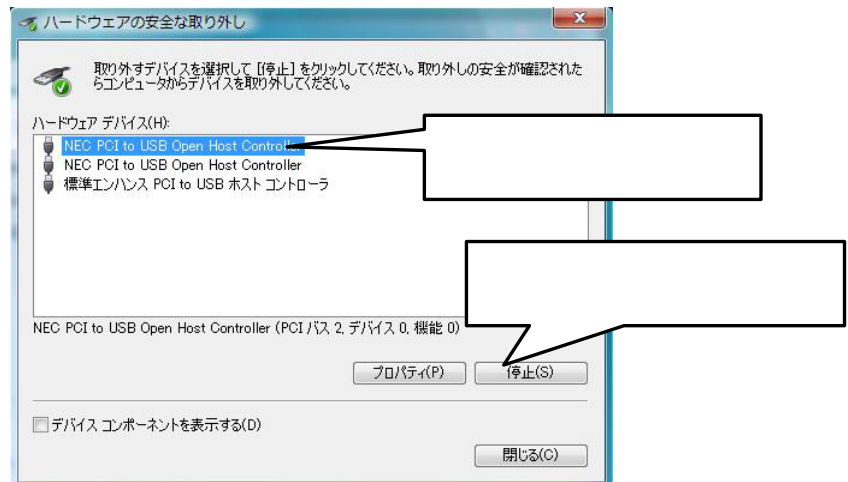
PC



2

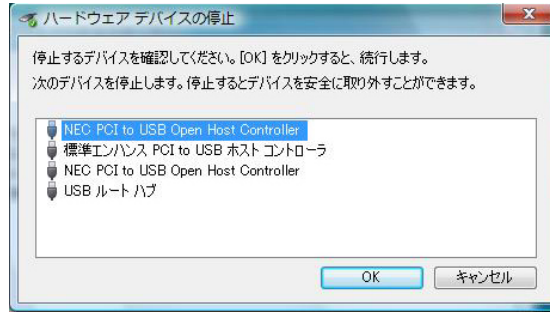
PCI to USB Open Host Controller

NEC

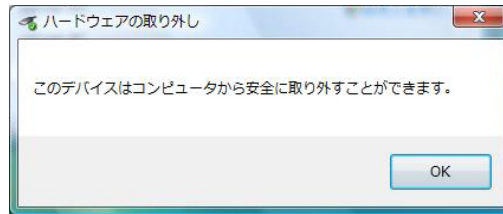


3 NEC PCI to USB Open Hbst Controller

OK



4 OK



5

	PC	Type II	CardBus
	ExpressCard34		
	480Mbps()		
	DC 3.3V± 1%		
()	120mA		
	1.5V 500mA()		
	3.3V 700mA()		
	106.5× 54.0× 9.0mm		
	22g		
	5	55	20 80%()



Speed Advance Just in time

<http://www.saj-inc.jp>